



Belgian Cancer Registry



Cancer Fact Sheet **Cervical Cancer**

ICD10 : C53

**Belgium 2020**

# 1. Cancer Incidence

## 1.1. Number of new diagnoses and incidence rates

**Table 1:** Cervical Cancer: Average age at diagnosis, number of new cancer diagnoses (N), crude rate (CR), age-standardised incidence rates (ESR and WSR) and cumulative risk by region, 2020

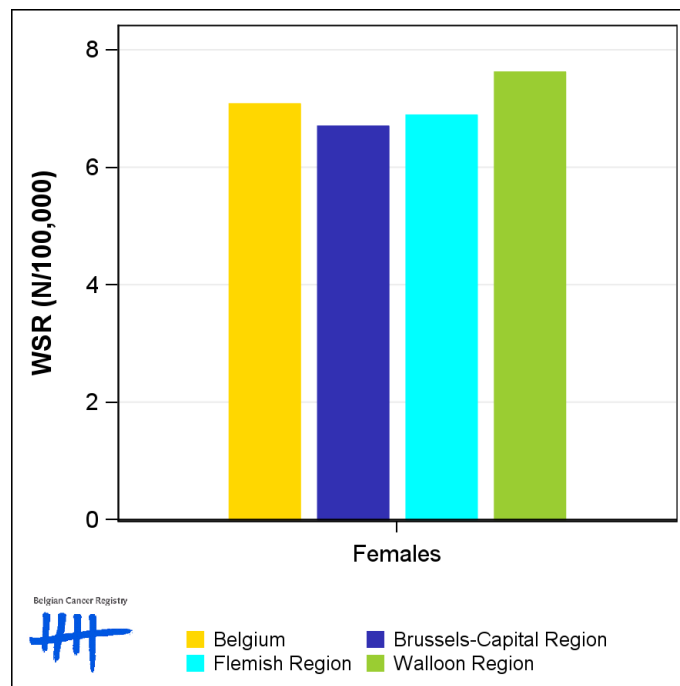
Females	Age (years)	N	CR	ESR	WSR	CRi
<b>Belgium</b>	<b>54.7</b>	<b>593</b>	<b>10.2</b>	<b>9.0</b>	<b>7.1</b>	<b>0.70</b>
Brussels-Capital Region	53.8	57	9.2	8.8	6.7	0.69
Flemish Region	54.3	329	9.8	8.7	6.9	0.67
Walloon Region	55.5	207	11.1	9.8	7.6	0.76

CR=Crude (all ages) Rate (N/100,000 person-years)  
 ESR (1976)=Age-Standardised Rate, using the European Standard Population (N/100,000 person-years)  
 WSR=Age-Standardised Rate, using the World Standard Population (N/100,000 person-years)  
 CRi=Cumulative Risk for 0-74 years (%)

Belgian Cancer Registry



**Figure 1:** Cervical Cancer: Age-standardised incidence rates by region, 2020



Belgian Cancer Registry



■ Belgium      ■ Brussels-Capital Region  
■ Flemish Region      ■ Walloon Region

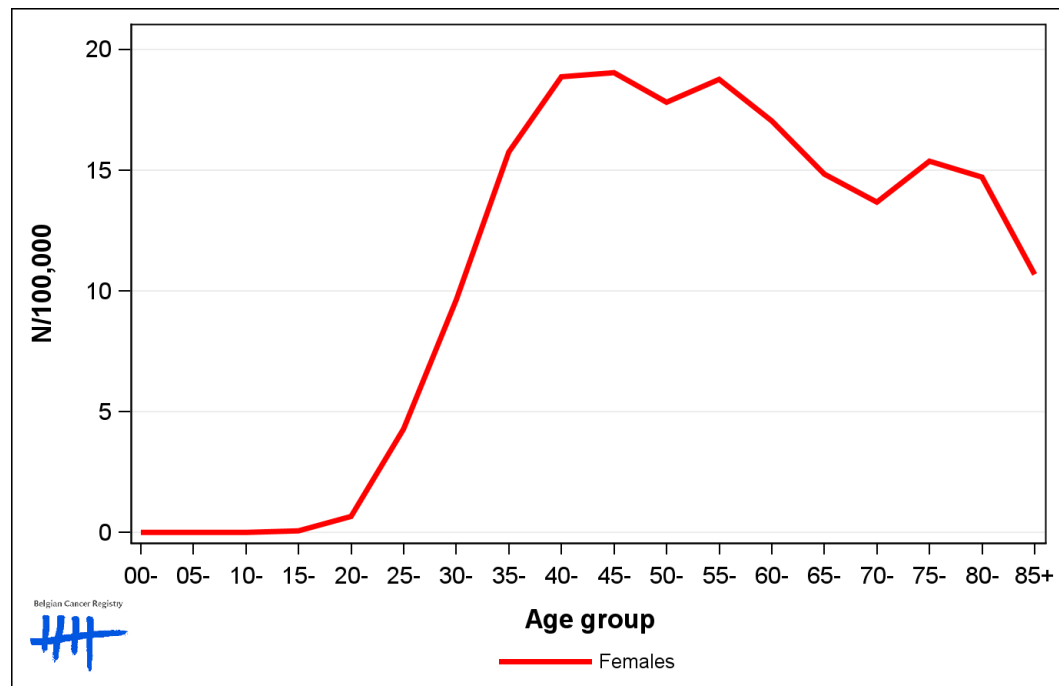
## 1.2. Age-specific incidence rates

**Table 2:** Cervical Cancer: Age-specific incidence rates, crude rate (CR) and age-standardised incidence rates (ESR and WSR), Belgium 2020

	00-	05-	10-	15-	20-	25-	30-	35-	40-	45-	50-	55-	60-	65-	70-	75-	80-	85+	CR	ESR	WSR
Females	0.0	0.0	0.0	0.0	0.9	3.0	7.5	17.4	19.1	18.5	17.4	16.8	15.3	11.5	12.8	12.5	21.2	6.7	10.2	9.0	7.1

CR=Crude (all ages) Rate (N/100,000 person-years)  
 ESR (1976)=Age-Standardised Rate, using the European Standard Population (N/100,000 person-years)  
 WSR=Age-Standardised Rate, using the World Standard Population (N/100,000 person-years)

**Figure 2:** Cervical Cancer: Age-specific incidence rates, 2016-2020



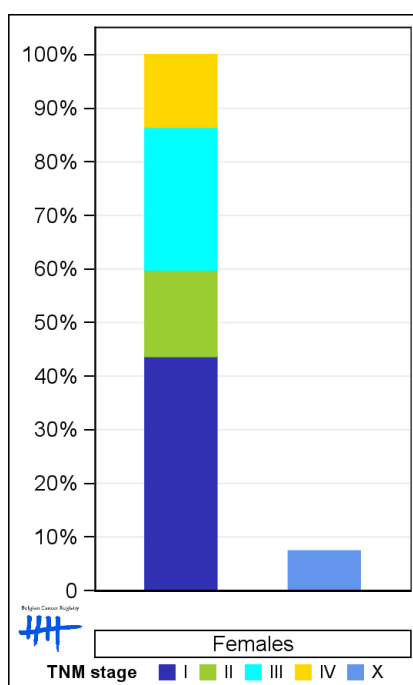
### 1.3. Combined stage

**Table 3:** Cervical Cancer: Distribution of combined stage, Belgium 2020

	Stage I	Stage II	Stage III	Stage IV	Stage X	Stage NA	Total
<b>Females</b>							
N	236	87	144	73	43	10	593
%	39.8	14.7	24.3	12.3	7.3	1.7	100

Staging according to the TNM 8th edition (Ref: Brierley JD, Gospodarowicz MK, Wittekind Ch. TNM classification of malignant tumours, UICC 8th edition)  
 Combined TNM stage : compilation of pathological (pTNM) and clinical (cTNM) stage. pTNM prevails over cTNM, except when cTNM stage is IV  
 Stage X: diagnoses with an unknown stage  
 Stage NA: diagnoses with a histological diagnosis where no stage can be evaluated (Not Applicable)

**Figure 3:** Cervical Cancer: Bar chart of known combined stage, Belgium 2020



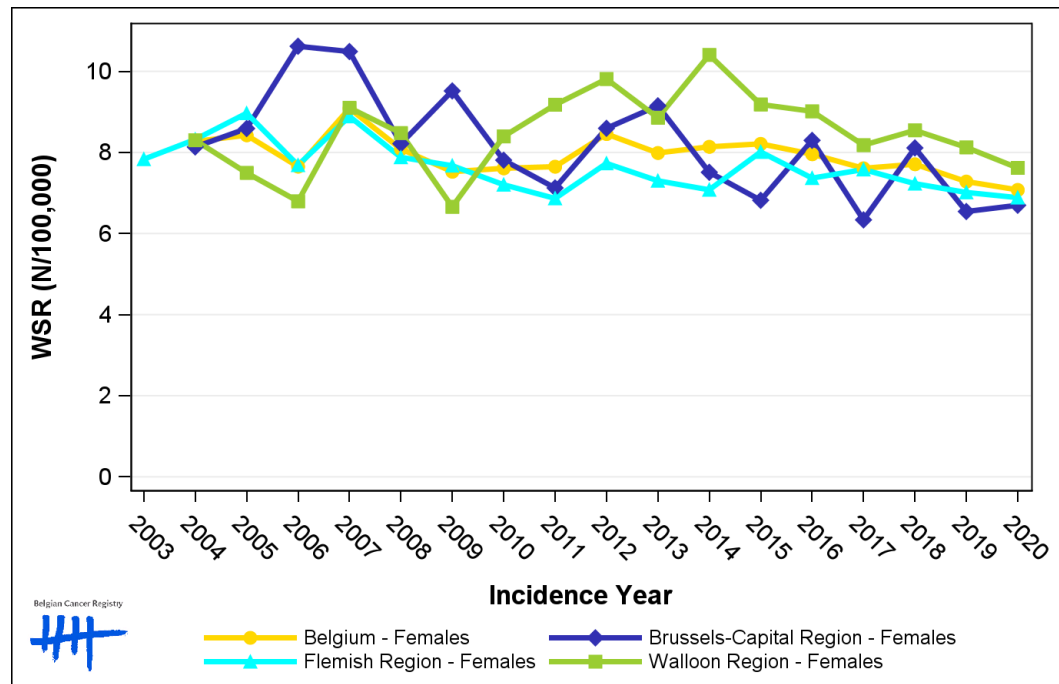
## 1.4. Trends in incidence

**Table 4:** Cervical Cancer: Age-standardised incidence rates (WSR) and average annual percentage change (AAPC) by incidence year and region

Females	2006	2007	2008	2009	2010	2011	2012	2013	2014	2015	2016	2017	2018	2019	2020	AAPC	95% CI
<b>Belgium</b>	7.7	9.1	8.1	7.5	7.6	7.6	8.5	8.0	8.1	8.2	8.0	7.6	7.7	7.3	7.1	-0.7	[-1.4; 0.1]
Brussels-Capital Region	10.6	10.5	8.2	9.5	7.8	7.1	8.6	9.2	7.5	6.8	8.3	6.3	8.1	6.5	6.7	-2.7	[-4.1; -1.3]
Flemish Region	7.7	8.9	7.9	7.7	7.2	6.9	7.7	7.3	7.1	8.0	7.4	7.6	7.2	7.0	6.9	-0.8	[-1.6; -0.1]
Walloon Region	6.8	9.1	8.5	6.7	8.4	9.2	9.8	8.9	10.4	9.2	9.0	8.2	8.5	8.1	7.6	0.2	[-1.0; 1.5]

WSR=Age-Standardised Rate, using the World Standard Population (N/100,000 person-years)  
 AAPC = Average Annual Percentage Change over the 2006-2020 period

**Figure 4:** Cervical Cancer: Age-standardised incidence rates (WSR) by incidence year and region



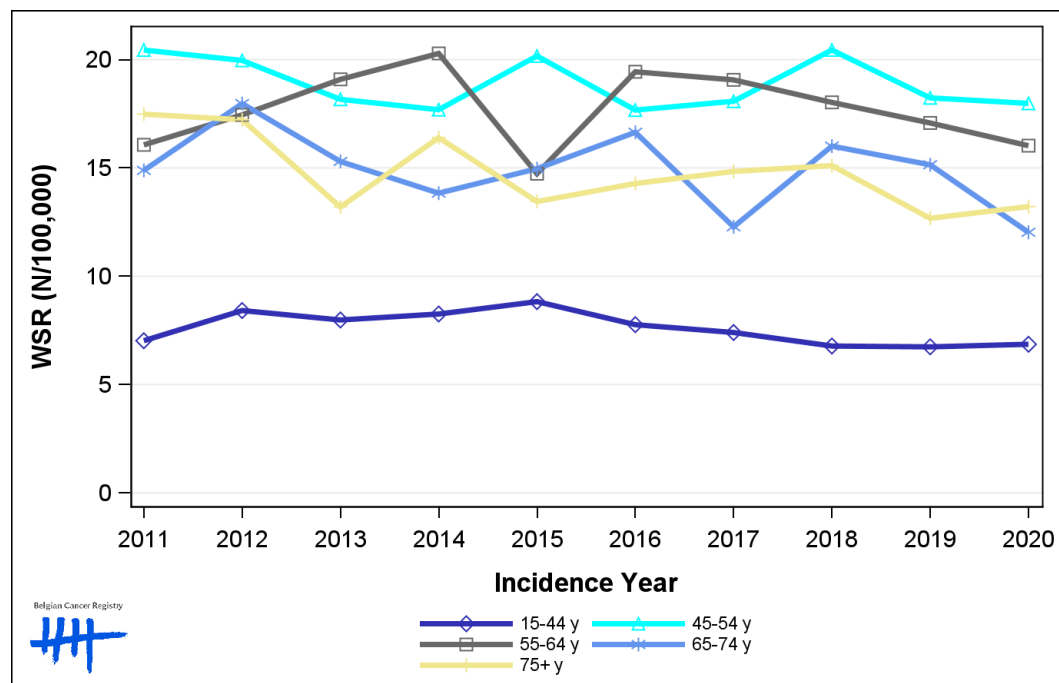
## 1.5. Incidence by broad age groups

**Table 5:** Cervical Cancer: Number of new diagnoses and age-standardised incidence rates (WSR) by broad age groups and incidence year, Belgium

	N										WSR									
	2011	2012	2013	2014	2015	2016	2017	2018	2019	2020	2011	2012	2013	2014	2015	2016	2017	2018	2019	2020
<b>Females</b>																				
All ages	626	682	634	665	648	647	633	645	611	593	7.6	8.5	8.0	8.1	8.2	8.0	7.6	7.7	7.3	7.1
0-14 y	0	0	0	0	0	0	0	0	0	0	0.0	0.0	0.0	0.0	0.0	0.0	0.0	0.0	0.0	0.0
15-44 y	177	214	203	208	223	195	188	172	172	177	7.0	8.4	8.0	8.3	8.8	7.8	7.4	6.8	6.7	6.9
45-54 y	162	158	145	140	156	138	145	159	143	138	20.4	20.0	18.2	17.7	20.2	17.7	18.1	20.4	18.2	18.0
55-64 y	110	120	132	142	105	141	141	135	129	123	16.1	17.5	19.1	20.3	14.7	19.4	19.1	18.0	17.1	16.0
65-74 y	73	91	79	73	81	92	70	90	91	74	14.9	18.0	15.3	13.8	15.0	16.6	12.3	16.0	15.1	12.0
75+ y	104	99	75	102	83	81	89	89	76	81	17.5	17.2	13.2	16.4	13.5	14.3	14.8	15.1	12.7	13.2

N=Number of invasive tumours  
WSR=Age-Standardised Rate, using the World Standard Population (N/100,000 person-years)

**Figure 5:** Cervical Cancer: Age-standardised incidence rates (WSR) versus incidence year by broad age groups, Belgium



Belgian Cancer Registry

Legend:  
 15-44 y (dark blue diamond)  
 45-54 y (cyan triangle)  
 55-64 y (black square)  
 65-74 y (light blue asterisk)  
 75+ y (yellow plus)

## 2. Relative survival

**Table 6:** Cervical Cancer: 5-year relative survival proportion by age group and region, Belgium 2016-2020

	5-year relative survival 2016-2020 (%)		
	Females		
	N at risk	estimate	95% CI
<b>Overall</b>	3,092	68.8	[66.6, 70.8]
<b>Age group</b>			
15-44 years	892	85.6	[82.7, 88.1]
45-64 years	1,371	70.4	[67.4, 73.3]
65+ years	829	45.3	[40.1, 50.4]
<b>Region</b>			
Brussels-Capital Region	290	68.3	[60.5, 75.2]
Flemish Region	1,716	70.6	[67.8, 73.2]
Walloon Region	1,087	66.1	[62.3, 69.6]

**Figure 6:** Cervical Cancer: relative survival proportion, Belgium 2016-2020

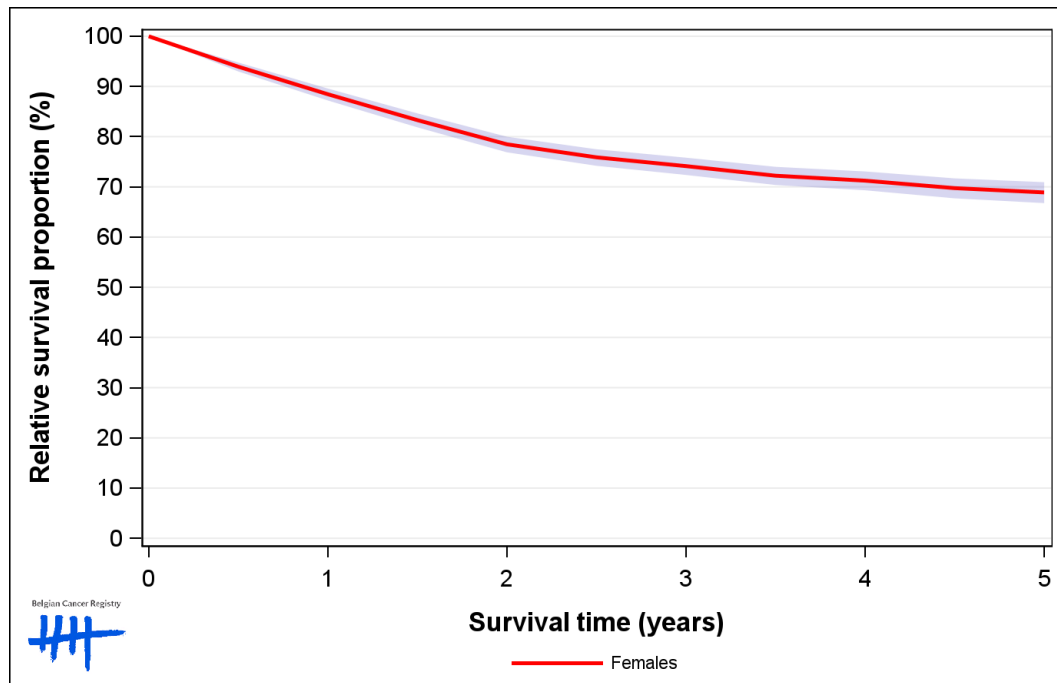


Figure 7: Cervical Cancer: relative survival proportion by age group, Belgium 2016-2020

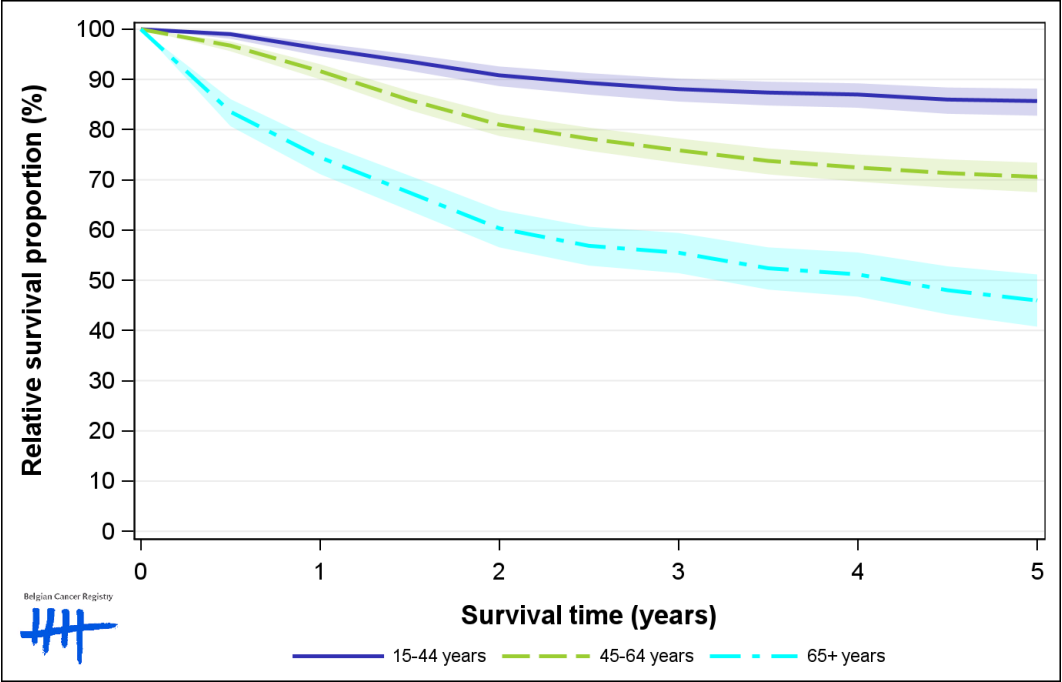


Figure 8: Cervical Cancer: relative survival proportion by region, Belgium 2016-2020

