

Belgian Cancer Registry



Cancer Fact Sheet **Corpus Uteri Cancer**

ICD10 : C54

Belgium 2021

1. Cancer Incidence

1.1. Number of new diagnoses and incidence rates

Table 1: Corpus Uteri Cancer: Average age at diagnosis, number of new cancer diagnoses (N), crude rate (CR), age-standardised incidence rates (ESR and WSR) and cumulative risk by region, 2021

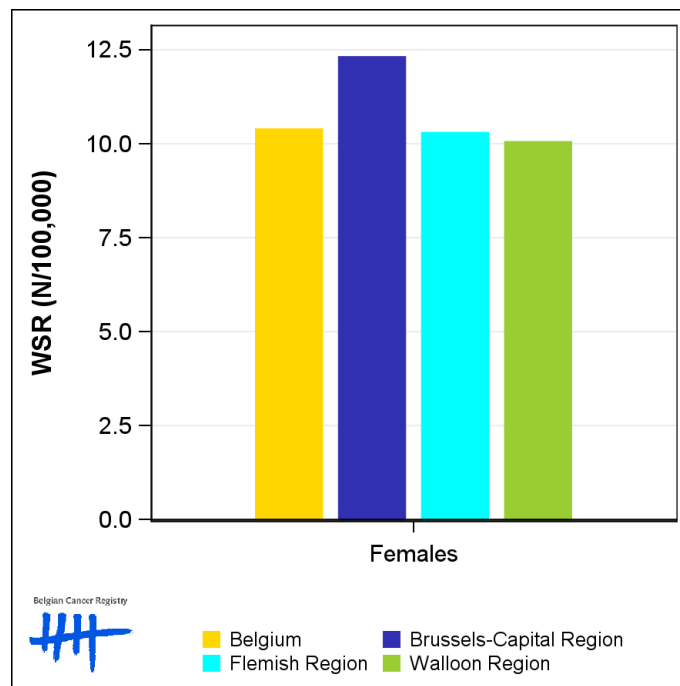
Females	Age (years)	N	CR	ESR	WSR	CRi
Belgium	70.3	1,420	24.3	15.2	10.4	1.30
Brussels-Capital Region	69.0	133	21.4	18.0	12.3	1.55
Flemish Region	70.8	850	25.3	15.1	10.3	1.30
Walloon Region	69.9	437	23.4	14.7	10.1	1.25

CR=Crude (all ages) Rate (N/100,000 person-years)
 ESR (1976)=Age-Standardised Rate, using the European Standard Population (N/100,000 person-years)
 WSR=Age-Standardised Rate, using the World Standard Population (N/100,000 person-years)
 CRi=Cumulative Risk for 0-74 years (%)

Belgian Cancer Registry



Figure 1: Corpus Uteri Cancer: Age-standardised incidence rates by region, 2021



Belgian Cancer Registry



■ Belgium ■ Brussels-Capital Region
■ Flemish Region ■ Walloon Region

1.2. Age-specific incidence rates

Table 2: Corpus Uteri Cancer: Age-specific incidence rates, crude rate (CR) and age-standardised incidence rates (ESR and WSR), Belgium 2021

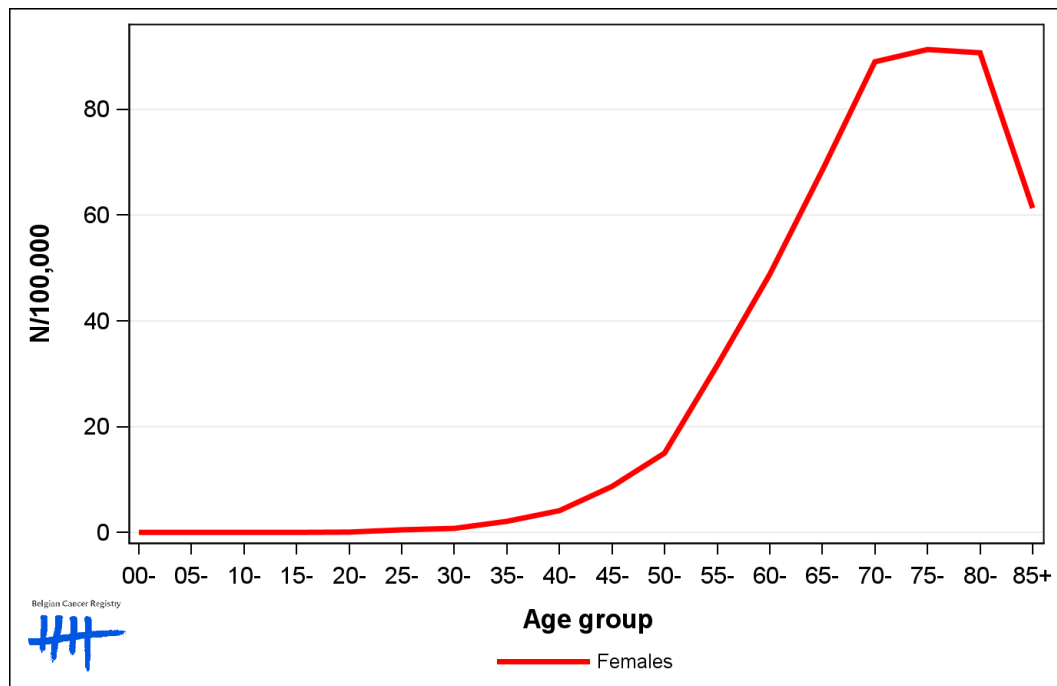
	00-	05-	10-	15-	20-	25-	30-	35-	40-	45-	50-	55-	60-	65-	70-	75-	80-	85+	CR	ESR	WSR
Females	0.0	0.0	0.0	0.0	0.3	0.5	0.3	3.0	5.9	7.2	14.4	30.5	45.2	72.9	82.3	93.3	92.4	71.6	24.3	15.2	10.4

CR=Crude (all ages) Rate (N/100,000 person-years)

ESR (1976)=Age-Standardised Rate, using the European Standard Population (N/100,000 person-years)

WSR=Age-Standardised Rate, using the World Standard Population (N/100,000 person-years)

Figure 2: Corpus Uteri Cancer: Age-specific incidence rates, 2017-2021



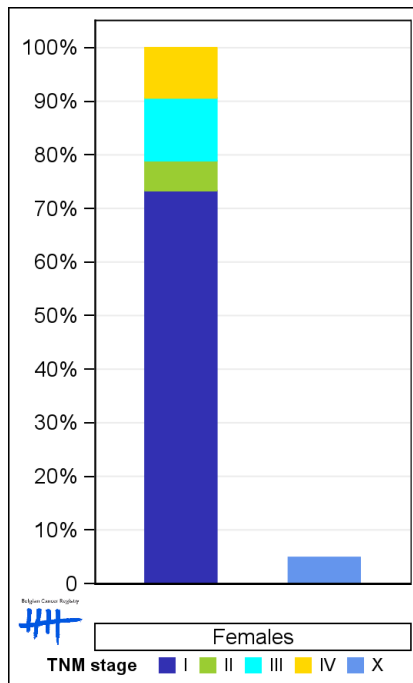
1.3. Combined stage

Table 3: Corpus Uteri Cancer: Distribution of combined stage, Belgium 2021

	Stage I	Stage II	Stage III	Stage IV	Stage X	Stage NA	Total
Females							
N	932	71	149	119	65	84	1,420
%	65.6	5.0	10.5	8.4	4.6	5.9	100

Staging according to the TNM 8th edition (Ref: Brierley JD, Gospodarowicz MK, Wittekind Ch. TNM classification of malignant tumours, UICC 8th edition)
 Combined TNM stage : compilation of pathological (pTNM) and clinical (cTNM) stage. pTNM prevails over cTNM, except when cTNM stage is IV
 Stage X: diagnoses with an unknown stage
 Stage NA: diagnoses with a histological diagnosis where no stage can be evaluated (Not Applicable)

Figure 3: Corpus Uteri Cancer: Bar chart of known combined stage, Belgium 2021



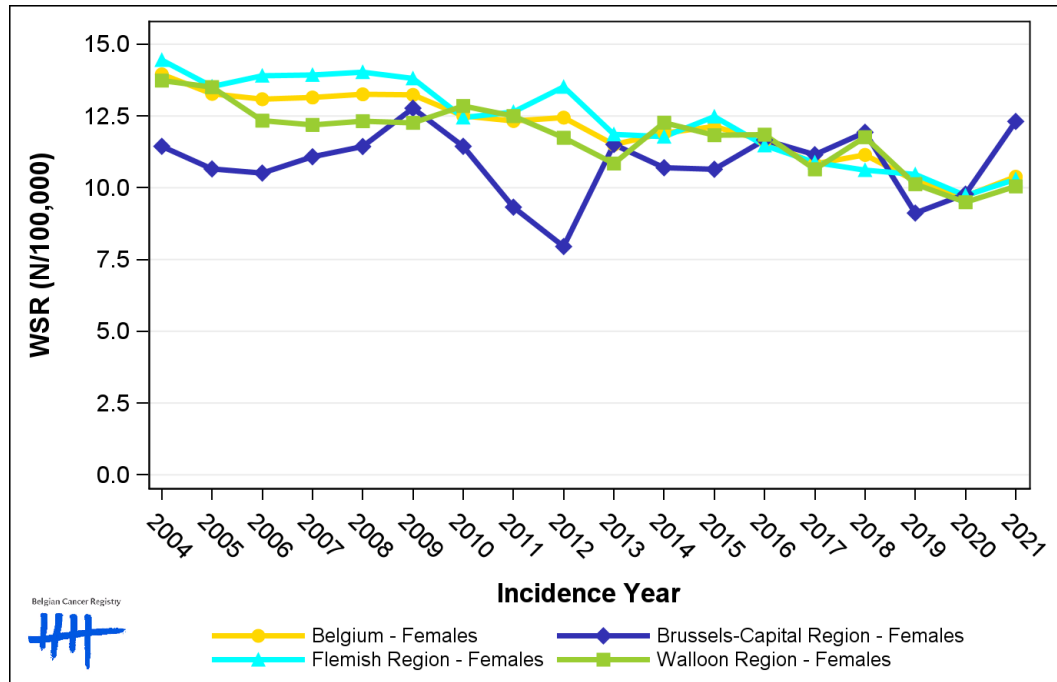
1.4. Trends in incidence

Table 4: Corpus Uteri Cancer: Age-standardised incidence rates (WSR) and average annual percentage change (AAPC) by incidence year and region

Females	2007	2008	2009	2010	2011	2012	2013	2014	2015	2016	2017	2018	2019	2020	2021	AAPC	95% CI
Belgium	13.1	13.3	13.2	12.5	12.3	12.4	11.5	11.9	12.1	11.6	10.8	11.1	10.2	9.7	10.4	-2.0	[-2.5; -1.6]
Brussels-Capital Region	11.1	11.4	12.8	11.4	9.3	8.0	11.5	10.7	10.6	11.7	11.2	11.9	9.1	9.8	12.3	-0.2	[-1.9; 1.5]
Flemish Region	13.9	14.0	13.8	12.4	12.6	13.5	11.9	11.8	12.5	11.5	10.9	10.6	10.5	9.7	10.3	-2.5	[-3.0; -2.0]
Walloon Region	12.2	12.3	12.3	12.8	12.5	11.7	10.8	12.3	11.8	11.9	10.6	11.8	10.1	9.5	10.1	-1.8	[-2.4; -1.1]

WSR=Age-Standardised Rate, using the World Standard Population (N/100,000 person-years)
 AAPC = Average Annual Percentage Change over the 2007-2021 period

Figure 4: Corpus Uteri Cancer: Age-standardised incidence rates (WSR) by incidence year and region



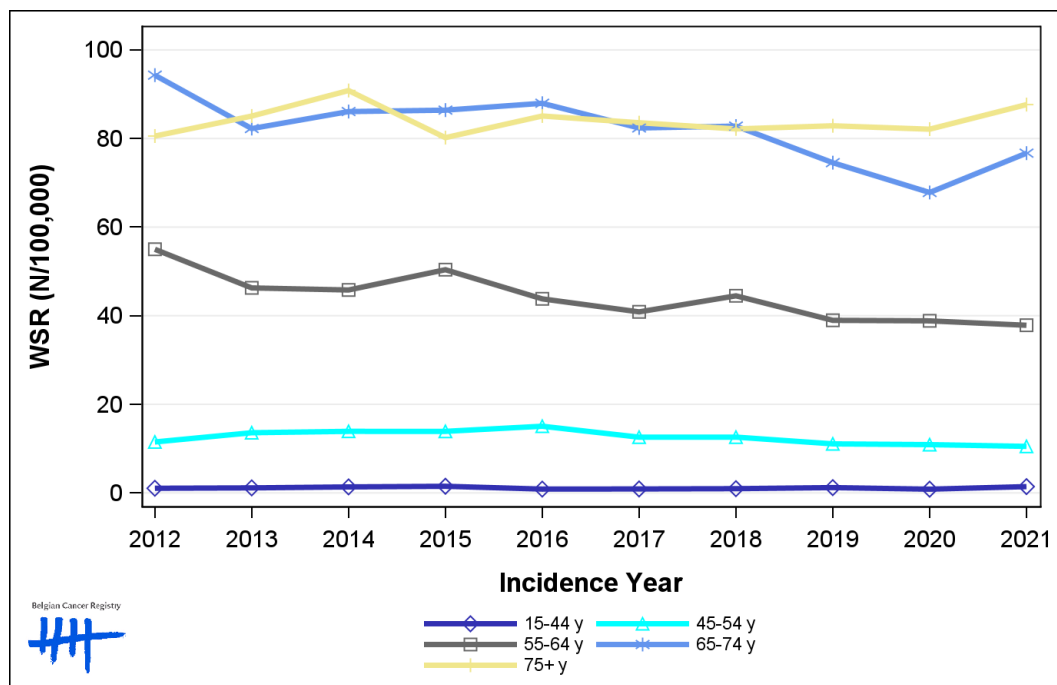
1.5. Incidence by broad age groups

Table 5: Corpus Uteri Cancer: Number of new diagnoses and age-standardised incidence rates (WSR) by broad age groups and incidence year, Belgium

	N											WSR									
	2012	2013	2014	2015	2016	2017	2018	2019	2020	2021	2012	2013	2014	2015	2016	2017	2018	2019	2020	2021	
Females																					
All ages	1,450	1,391	1,464	1,458	1,443	1,398	1,439	1,349	1,305	1,420	12.4	11.5	11.9	12.1	11.6	10.8	11.1	10.2	9.7	10.4	
0-14 y	0	0	0	0	0	0	0	0	0	0	0.0	0.0	0.0	0.0	0.0	0.0	0.0	0.0	0.0	0.0	
15-44 y	27	28	35	40	23	23	25	31	22	37	1.1	1.1	1.4	1.5	0.9	0.9	1.0	1.2	0.9	1.4	
45-54 y	95	113	116	116	123	105	101	89	85	83	11.5	13.6	13.9	13.9	15.1	12.6	12.6	11.1	10.9	10.5	
55-64 y	376	318	317	356	313	298	328	292	294	290	55.0	46.3	45.8	50.4	43.8	40.9	44.5	39.0	38.8	37.9	
65-74 y	479	426	455	465	488	476	496	454	423	482	94.3	82.3	86.1	86.4	88.0	82.4	82.8	74.6	67.8	76.7	
75+ y	473	506	541	481	496	496	489	483	481	528	80.6	85.1	90.8	80.2	85.1	83.6	82.2	82.9	82.1	87.7	

N=Number of invasive tumours
WSR=Age-Standardised Rate, using the World Standard Population (N/100,000 person-years)

Figure 5: Corpus Uteri Cancer: Age-standardised incidence rates (WSR) versus incidence year by broad age groups, Belgium



Belgian Cancer Registry

2. Relative survival

Table 6: Corpus Uteri Cancer: 5-year relative survival proportion by age group and region, Belgium 2017-2021

	5-year relative survival 2017-2021 (%)		
	Females		
	N at risk	estimate	95% CI
Overall	6,878	79.9	[78.3, 81.4]
Age group			
15-54 years	595	88.6	[85.0, 91.5]
55-69 years	2,583	84.8	[82.8, 86.7]
70+ years	3,700	74.7	[72.1, 77.2]
Region			
Brussels-Capital Region	551	78.2	[72.4, 83.4]
Flemish Region	4,132	80.3	[78.4, 82.2]
Walloon Region	2,195	79.5	[76.6, 82.2]

Figure 6: Corpus Uteri Cancer: relative survival proportion, Belgium 2017-2021

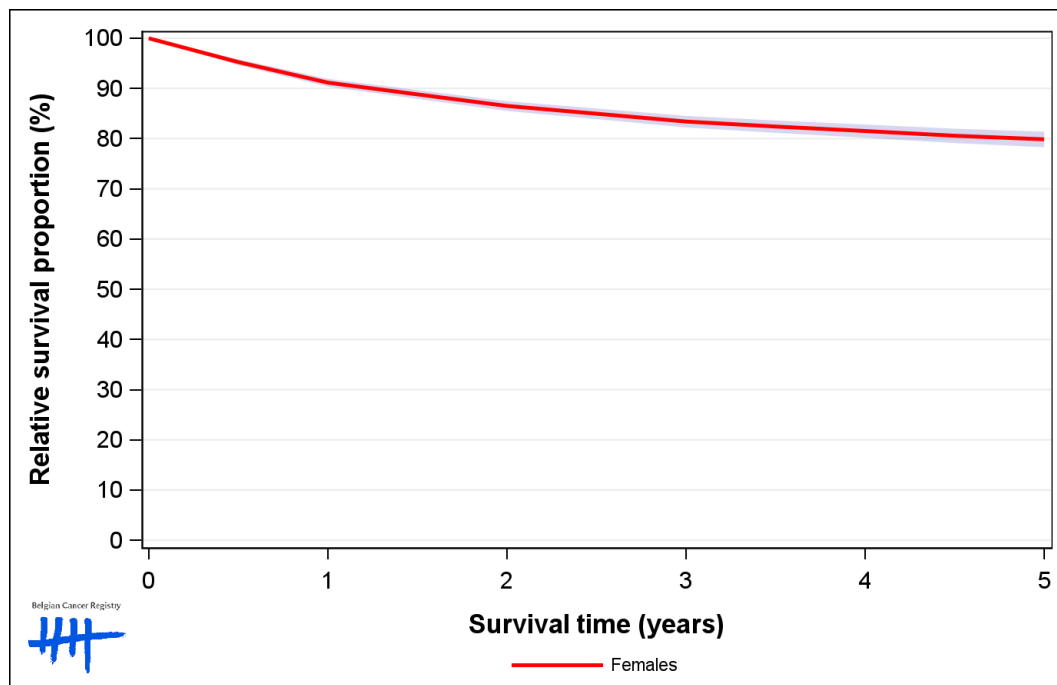


Figure 7: Corpus Uteri Cancer: relative survival proportion by age group, Belgium 2017-2021

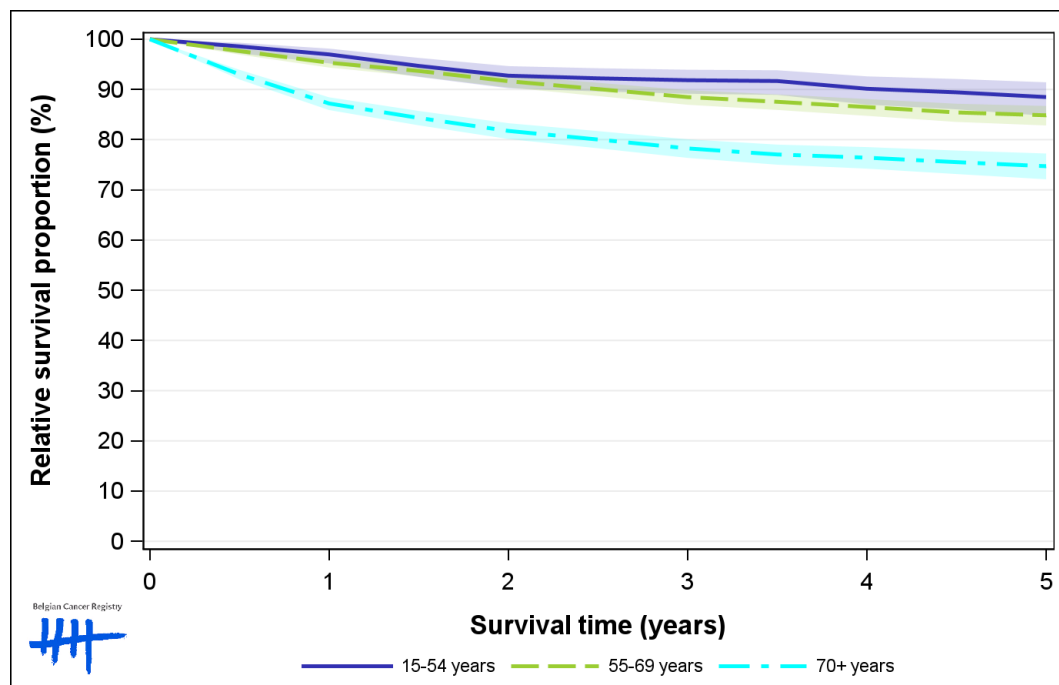


Figure 8: Corpus Uteri Cancer: relative survival proportion by region, Belgium 2017-2021

